



## Shared Learning Webinar

# Effects of Covid-19 on Families with Children Under Five in Nottingham

28<sup>th</sup> January 2021

Donna Sherratt – SSBC Programme Manager

[www.smallstepsbigchanges.org.uk](http://www.smallstepsbigchanges.org.uk)

 Small Steps Big Changes  @ncitycare\_SSBC

# SSBC Response to the Recommendations

1. Develop the parent peer mentoring scheme to include **putting parents who have felt isolated during** lockdown in touch with those of their own community (especially where English is not their first language).
2. Increase efforts to involve young **children in decision-making** processes and promote their rights to be heard.
3. Make **strong representations to Government**, Local Authority and other policy makers to put children's needs first when considering Covid-19 policy.
4. Resist the **pause of children and family services** in future emergencies, and restore any that are not restored to date.
5. Provide all-year supervised **outdoor** group activities.
6. Evaluate the **effectiveness of telephone or video, as opposed to face-to-face**, contact.
7. Develop working practices to assess family intervention needs early and prevent risk at home.
8. Develop services delivered face to face and virtually to young children that include the use of languages other than English.

---

# Themes

Influencing policy

Isolation & Loneliness

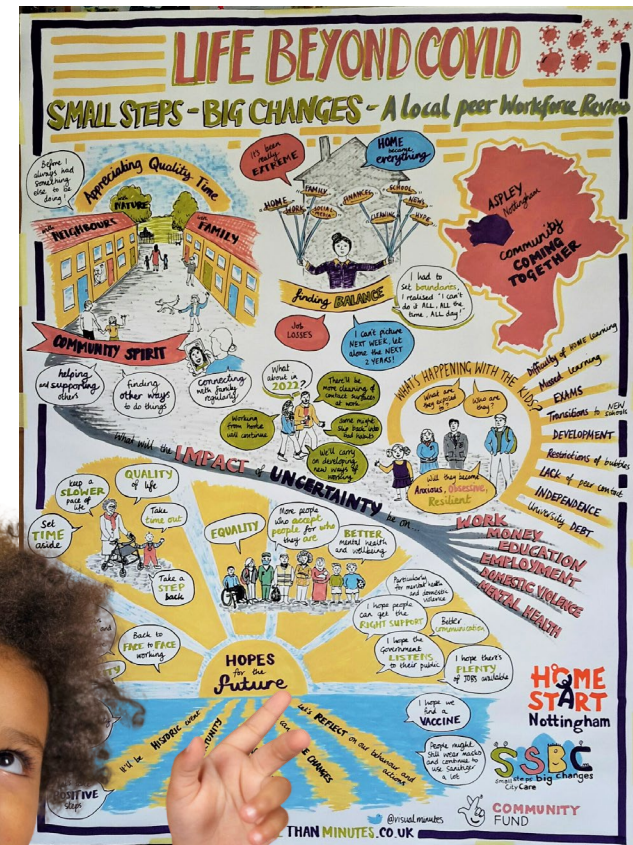
How services  
have been adapted

Areas we are continuing to  
explore further



# Influencing Policy

- ❖ May 2020 – SSBC submit written evidence to the Education Committee's inquiry, 'The impact of COVID-19 on education and children's services.'
- ❖ September 2020 – House of Lords Life after Covid-19 Committee submission
- ❖ October 2020 – SSBC Evidence for the Leadsom Review submitted
- ❖ November 2020 – Parental Mental health evidence submission
- ❖ November 2020 – SSBC Contribute to first 1001 days Movement evidence review workshops

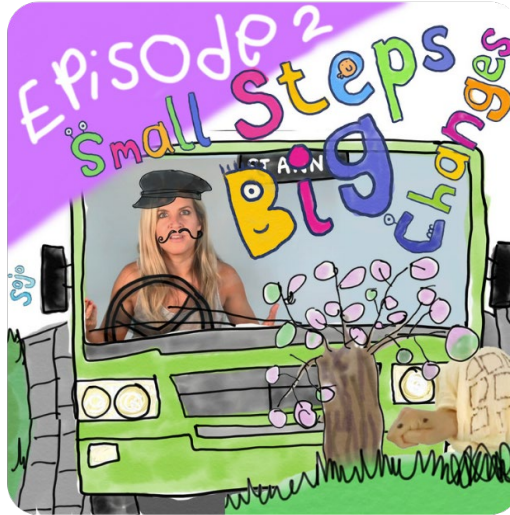


# Isolation & Loneliness

- ✿ Community Connection – Parent Champion calls
- ✿ Refocused Ideas Fund – supporting community commissioned projects
- ✿ Nottingham City Council – built on dedicated loneliness web page (ESOL pathway)
- ✿ Family Mentors – rapid response calls



# How have we adapted services?



- ✿ Resource packs
- ✿ Working group formed – Improving access to diverse communities
- ✿ SOJO Commissioned for SSBC TV
- ✿ Read on Nottingham bilingual stories
- ✿ Digital groups
- ✿ Increased social media activity



---

# Areas we are continuing to explore further

- ✿ Hear directly from children
- ✿ Explore perceptions of online vs. face to face (Nottingham Trent University evaluation)
- ✿ Commission of a parent and infant mental health team
- ✿ Achieve 'Child Friendly City' status for Nottingham

